

Commodity Overview

27-11-2024



Commodity Overview

GOLD1!+SILVER1!, 1D, MCX O163,481 H164,585 L162,287 C163,461 +451 (+0.28%) Vol19.67K
Vol (50) 19.67K



Gold & Silver overview:

Gold prices remained steady on Tuesday as threats of more trade tariffs from president-elect Donald Trump buoyed demand for safe havens, although a spike in the dollar limited any major metal gains. The yellow metal was nursing steep losses from the prior session after multiple reports suggested that a ceasefire between Israel and Lebanon was close, which dented safe haven demand.

Silver remained up marginally yesterday as Trump threatened to impose a 10% import tariff on China, and a 25% import on Canada and Mexico, claiming the measures were to stem the alleged inflow of illegal immigrants and illicit drugs through the U.S. border countries. His threats ramped up investor concerns over a renewed global trade war, especially with China. Still, bigger gains in gold were held back as the dollar surged after Trump's announcement. The greenback came back in sight of a two-year high hit last week, which capped the gain of precious metals.

Technical levels:

GOLD :Technically, gold prices may remain range-bound today. It has support at 74500 and resistance at 76000.

SILVER :A range-bound movement is expected in silver post FOMC meeting minutes. Silver has support at 86000 and resistance at 91000.

Commodity Overview

CRUDEOIL1!+NATURALGAS1!, 1D, MCX O6,135 H6,236 L6,042 C6,067 -43 (-0.71%) Vol186.35K
Vol (50) 186.35K



Crude oil & Natural gas overview:

Oil prices given up all the gain of early session of yesterday due to a potential ceasefire between Israel and Lebanon's Hezbollah, which had weighed on oil's risk premium. Prices fell sharply for two consecutive days after multiple reports that Israel and Lebanon had agreed to the terms of a deal to end the Israel-Hezbollah conflict. A senior Israeli official said Israel looks set to approve a U.S. plan for a ceasefire on Tuesday. However, OPEC+ may consider leaving its current oil output cuts in place from Jan. 1 at its next meeting on Sunday. The producer group is already postponing hikes amid global demand worries.

Natural gas remained steady as weather projections indicate normal conditions through November 27, followed by colder-than-normal temperatures from November 28 to December 7. Consequently, gas demand, including exports, is expected to rise significantly from 108.0 bcf/d this week to 116.5 bcf/d next week and 133.9 bcf/d in two weeks.

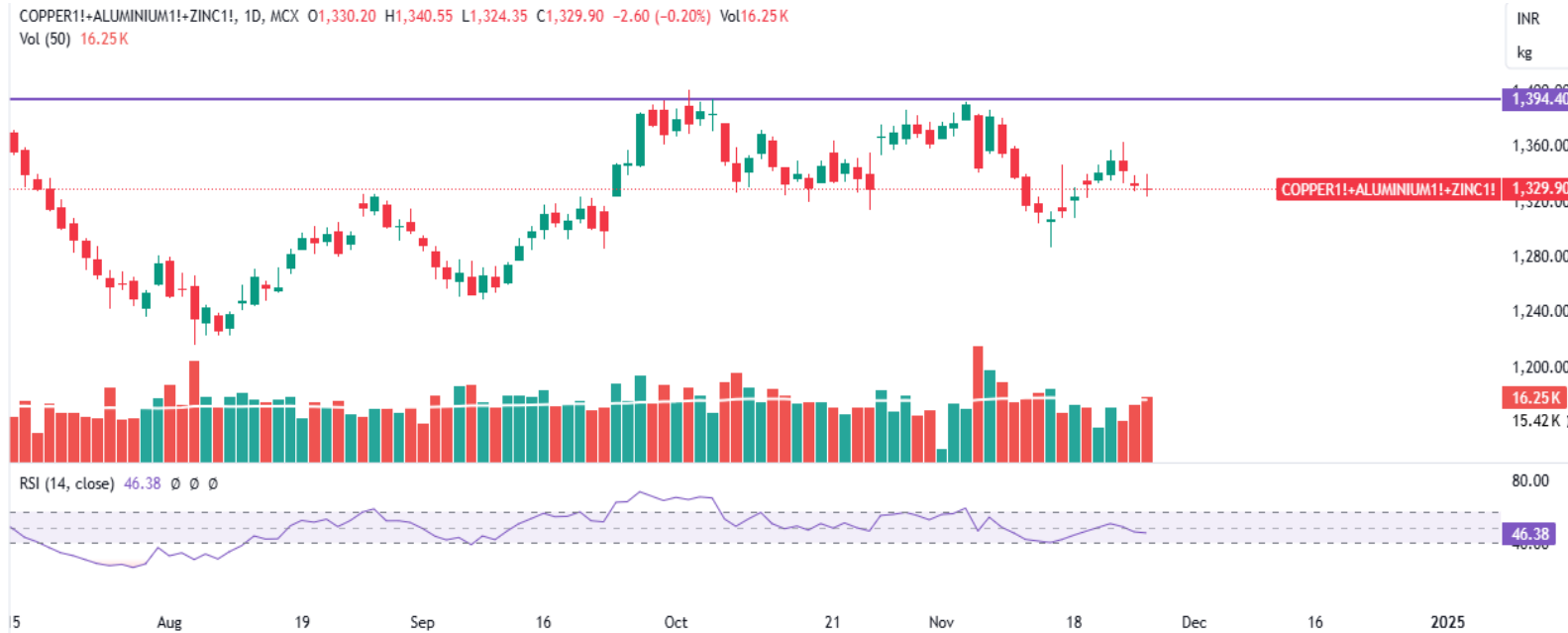
Technical levels:

CRUDE OIL: Technically, the day trend may remain down in crude oil today. It has support at 5600 and resistance at 6000.

NATURAL GAS: Technically, the trend may remain upside in natural gas today. It has resistance at 321 and support at 270.

Commodity Overview

COPPER1!+ALUMINIUM1!+ZINC1!, 1D, MCX O1,330.20 H1,340.55 L1,324.35 C1,329.90 -2.60 (-0.20%) Vol16.25K
Vol (50) 16.25K



Base metals overview:

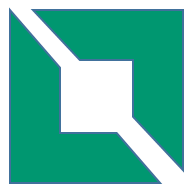
The US Fed's meeting minutes indicated that officials are inclined to cut interest rates gradually in the future, with some analysts already predicting a pause in rate cuts next month. Meanwhile, Trump promised to impose significant tariffs on Canada and Mexico. The US dollar index rebounded slightly, and all three major US stock indices closed higher, which was bearish for copper prices. Some analysts also noted that the inflation risk from the tariff hike could hinder the US Fed's rate cuts. Fundamentally, as trading shifted to cargoes with invoices dated next month yesterday, downstream buyers mostly sought cargoes with invoices dated this month. Some suppliers stood firm on quotes and were reluctant to sell, leading to overall poor market transactions. Recently, both imported and domestic copper arrivals in Guangdong have been low, and downstream orders in Guangdong have been strong, with some copper rod plants operating at full capacity. As a result, local inventories in Guangdong have almost depleted. Additionally, due to the still significant price spread between Shanghai and Guangdong, some east China cargoes are expected to move south, providing support for the bottom of the premiums. Price side, there remains significant macro uncertainty, and the market is awaiting more data from the US.

Technical levels:

COPPER: Copper prices fluctuated yesterday, closing near the day's low. The next significant support level is at 795, while resistance is anticipated at 820.

ZINC: Zinc prices experienced a strong bullish rally but were unable to break through the immediate resistance level of 286. Support for the metal is currently at 276.

ALUMINIUM: Aluminum opened lower and faced resistance at the 244 level. Support for the metal is currently at 238.



Commodity Overview



Nirpendra Yadav Sr. Research Analyst

Disclosure:

M/s. Bonanza Portfolio Ltd here by declares that views expressed in this report accurately reflect view point with subject to companies/securities. M/s. Bonanza Portfolio Ltd has taken reasonable care to achieve and maintain independence and objectivity in making any recommendations. The Analysts engaged in preparation of this Report or his/her relative: - (a) do not have any financial interests in the subject company mentioned in this Report; (b) do not own 1% or more of the equity securities of the subject company mentioned in the report as of the last day of the month preceding the publication of the research report; (c) do not have any material conflict of interest at the time of publication of the Report. The Analysts engaged in preparation of this Report:- (a) have not received any compensation from the subject company in the past twelve months; (b) have not managed or co-managed public offering of securities for the subject company in the past twelve months; (c) have not received any compensation for investment banking or merchant banking or brokerage services from the subject company in the past twelve months; (d) have not received any compensation for products or services other than investment banking or merchant banking or brokerage services from the subject company in the past twelve months; (e) has not received any compensation or other benefits from the subject company or third party in connection with the Report; (f) has not served as an officer, director or employee of the subject company; (g) is not engaged in market making activity for the subject company. M/s. Bonanza Portfolio Ltd is a registered Research Analyst under the regulation of SEBI, the year 2014. The Regn No. INH100001666 and research analyst engaged in preparing reports is qualified as per the regulation's provision.

Disclaimer:

This research report has been published by M/s. Bonanza portfolio Ltd and is meant solely for use by the recipient and is not for circulation. This document is for information purposes only and information / opinions / views are not meant to serve as a professional investment guide for the readers. Reasonable care has been taken to ensure that information given at the time believed to be fair and correct and opinions based thereupon are reasonable, due to the nature of research it cannot be warranted or represented that it is accurate or complete and it should not be relied upon as such. If this report is inadvertently send or has reached to any individual, same may be ignored and brought to the attention of the sender. Preparation of this research report does not constitute a personal recommendation or take into account the particular investment objectives, financial situations, or needs of individual clients. Past performance is not a guide for future performance. This Report has been prepared on the basis of publicly available information, internally developed data and other sources believed by Bonanza portfolio Ltd to be reliable. This report should not be taken as the only base for any market transaction; however this data is representation of one of the support document among other market risk criterion. The market participant can have an idea of risk involved to use this information as the only source for any market related activity. The distribution of this report in definite jurisdictions may be restricted by law, and persons in whose custody this report comes, should observe, any such restrictions. The revelation of interest statements integrated in this analysis are provided exclusively to improve & enhance the transparency and should not be treated as endorsement of the views expressed in the analysis. The price and value of the investments referred to in this report and the income from them may go down as well as up. Bonanza portfolio Ltd or its directors, employees, affiliates or representatives do not assume any responsibility for, or warrant the accuracy, completeness, adequacy and reliability of such information / opinions / views. While due care has been taken to ensure that > Mahesh Choice: the disclosures and opinions given are fair and reasonable, none of the directors, employees, affiliates or representatives of M/s. Bonanza portfolio Ltd shall be liable. Research report may differ between M/s. Bonanza portfolio Ltd RAs and other companies on account of differences in, personal judgment and difference in time horizons for which recommendations are made. Research entity has not been engaged in market making activity for the subject company. Research analyst has not served as an officer, director or employee of the subject company. Research analyst have not received any compensation/benefits from the the Subject Company or third party in connection with the research report.

M/s. Bonanza Portfolio Ltd at Bonanza House, Plot No. M-2, Cama Industrial Estate. Walbhat Road, Goregaon (E), Mumbai – 400063 Web site: <https://www.bonanzaonline.com>

Research Analyst Regn No. INH100001666

SEBI Regn. No.: INZ000212137

BSE /NSE/MCX : [CASH] DERIVATIVE| CURRENCY DERIVATIVE | COMMODITY SEGMENT|

| CDSL: | 120 33500 | NSDL: | IN 301477 || PMS: INP 000000985 | AMFI: ARN -0186